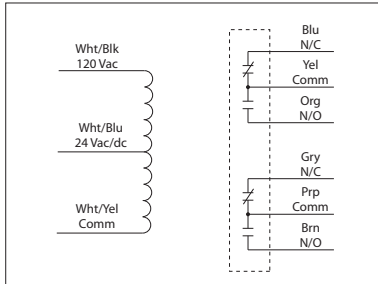


10 AMP PILOT CONTROL RELAYS

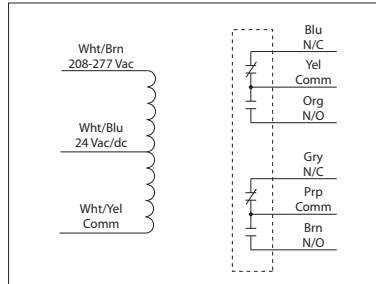
RIB2401D

Enclosed Relay 10 Amp DPDT with
24 Vac/dc/120 Vac Coil



RIB2402D

Enclosed Relay 10 Amp DPDT with
24 Vac/dc/208-277 Vac Coil



RIB2401D-RD
RIB2402D-RD
• Red housing



RIB2401D-N4
RIB2402D-N4
• NEMA 4X housing,
UL508 only

RELAYS

SPECIFICATIONS

Relays & Contact Type: One (1) DPDT Continuous Duty Coil

Expected Relay Life: 10 million cycles minimum mechanical

Operating Temperature: -30 to 140° F

Humidity Range: 5 to 95% (noncondensing)

Operate Time: 8ms

Relay Status: LED On = Activated

Dimensions: 1.70" x 2.80" x 1.50" with .50" NPT nipple

Wires: 16", 600V Rated

Approvals: UL Listed, UL916, UL864, C-UL California State Fire Marshal

Housing Rating: UL Accepted for Use in Plenum, NEMA 1

Gold Flash: No

Override Switch: No

Contact Ratings:

10 Amp Resistive @ 30 Vdc

10 Amp General Use @ 277 Vac

1/2 HP @ 120/240 Vac (N/O)

1/3 HP @ 120/240 Vac (N/C)

B300 Pilot Duty

120 Vac 30A Make 3A Break (360 VA)

240 Vac 15 A Make 1.5A Break (360 VA)

208 Vac 17.3A Make 1.73A Break (360 VA)

277 Vac 13A Make 1.3A Break (360 VA)

24 Vac 30A Make 5A Break (120VA) 5A Max

Coil Current:

24 mA @ 18 Vac 20 mA @ 20 Vdc

32 mA @ 24 Vac 24 mA @ 24 Vdc

40 mA @ 30 Vac 36 mA @ 30 Vdc

31 mA @ 120 Vac (RIB2401D)

36 mA @ 208-277 Vac (RIB2402D)

Coil Voltage Input:

24 Vac/dc ; 120 Vac ; 50-60 Hz (RIB2401D)

24 Vac/dc ; 208-277 Vac ; 50-60 Hz (RIB2402D)

Drop Out = 3 Vac / 3.8 Vdc

Pull In = 18 Vac / 20 Vdc